

3.1.4.2 Calibration curve 2

Table 3.14 Calibration curve data of intra-day two of validation.

Theoretical conc. (ng/ml)	Propranolol Area	Sildenafil Area	Ratio	Measured Conc.	Accuracy %
50	1180	111556	0.0106	53.056	106.11
100	3095	121657	0.0254	103.068	103.07
200	5848	115159	0.0508	188.341	94.17
500	16946	119581	0.1417	494.315	98.86
1000	29014	102128	0.2841	973.427	97.34
2000	61319	106711	0.5746	1951.055	97.55
3000	111458	122195	0.9121	3086.744	102.89

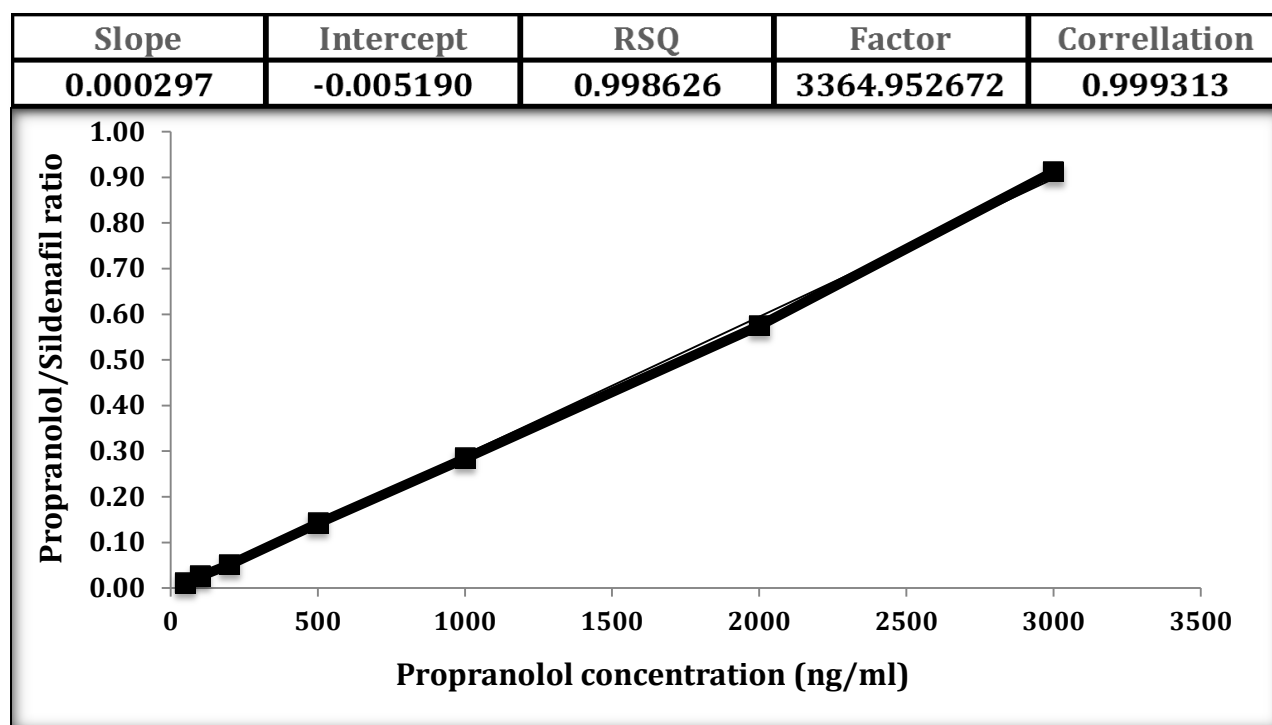


Figure 3.2 Intra-day two calibration curve of propranolol in Krebs buffer.

Measured Conc. = (Ratio +0.005190)/ 0.000297
 Function is $Y = 0.000297X - 0.005190$ ($R^2 = 0.9978626$)